



TIGER Drylac[®] 49/31100
RAL 3003 Ruby Red 85±5



TIGER Drylac[®] 49/33333
Bengal Red 90±5



TIGER Drylac[®] 49/31040
RAL 3020 Traffic Red 85±5



TIGER Drylac[®] 49/33730
International Orange 80±5



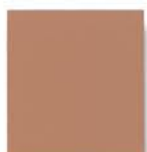
TIGER Drylac[®] 49/22222
Bengal Orange 95±5



TIGER Drylac[®] 49/22240
RAL 1033 Yellow 85±5



TIGER Drylac[®] 49/66666
Bengal Yellow 95±5



TIGER Drylac[®] 49/62350
Southwest Mauve 75±5



TIGER Drylac[®] 49/51610
OGF Moss Green 80±5



TIGER Drylac[®] 49/55555
Bengal Green 95±5



TIGER Drylac[®] 39/44500
Post Office Blue 85±5



TIGER Drylac[®] 49/44444
Bengal Blue 95±5



TIGER Drylac[®] 49/42330
RAL 5015 Sky Blue 85±5



TIGER Drylac[®] 39/43011
Blue Hammetone



TIGER Drylac[®] 49/70158
Bengal Dark Gray 95±5



TIGER Drylac[®] 49/77777
Bengal Light Grey 95±5



TIGER Drylac[®] 49/73300
RAL 7004 Signal Grey 85±5



TIGER Drylac[®] 49/70082
ASA 61 Grey Semi-Gloss 60±5



TIGER Drylac[®] 49/73510
RAL 7035 Light Grey 85±5



TIGER Drylac[®] 69/90350
Zinc Rich Primer 70±5



TIGER Drylac[®] 69/70000
Zinc Free Primer 3±2



TIGER Drylac[®] 09/73841
Outg. Forgiving Primer 70±5



TIGER Drylac[®] 49/00530
Clear Gloss



TIGER Drylac[®] 49/00280
Clear Semi-Gloss



TIGER Drylac[®] 16/00030
Clear Matte

Gloss level according to Gardner 60° ASTM D523.

Paper and ink limitations of color samples as well as influence from heat and light account for differences from actual powder coatings.



TIGER Drylac[®] 49/88888
Bengal Black 95±5



TIGER Drylac[®] 39/80040
Black Semi-Gloss 60±5



TIGER Drylac[®] 49/80600
Alaska Black 85±5



TIGER Drylac[®] 39/80020
Black Matte 20±5



TIGER Drylac[®] 69/80331
Black Interior 4±2



TIGER Drylac[®] 09/80450
RAL 9011 Black RT Matte



TIGER Drylac[®] 39/81420
Jet Black Hammetone



TIGER Drylac[®] 39/80200
Black Fine Texture



TIGER Drylac[®] 49/81241
Black Extra Fine Texture



TIGER Drylac[®] 49/80830
Black Matte Fine Texture



TIGER Drylac[®] 39/80170
Black Wrinkle



TIGER Drylac[®] 49/81430
Black 40±5



TIGER Drylac[®] 49/11111
Bengal White 95±5



TIGER Drylac[®] 39/10210
Apollo White 90±5



TIGER Drylac[®] 49/13721
Blanco 90±5



TIGER Drylac[®] 49/13770
Lighting White 90±5



TIGER Drylac[®] 49/13780
Cirrus White 70±5



TIGER Drylac[®] 39/10200
Appliance White 90±5



TIGER Drylac[®] 49/11350
White Matte 20±5



TIGER Drylac[®] 49/13370
Off White 60±5



TIGER Drylac[®] 49/13150
White Fine Texture



TIGER Drylac[®] 49/11570
Nature White RT Glossy



TIGER Drylac[®] 39/10070
White Wrinkle



TIGER Drylac[®] 09/10890
RAL9002 Grey White Int. 20±5



TIGER Drylac[®] 44/10033
Quartzite Smooth Matte

Gloss level according to Gardner 60° ASTM D523.

Paper and ink limitations of color samples as well as influence from heat and light account for differences from actual powder coatings.



TIGER Drylac[®] 39/90177
Xtreme Chrome



TIGER Drylac[®] 49/90450
Sparkle Silver



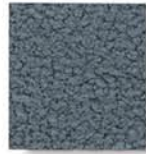
TIGER Drylac[®] 49/90380
Standard Silver



TIGER Drylac[®] 49/99999
Bengal Silver



TIGER Drylac[®] 49/91260
Mirror Silver



TIGER Drylac[®] 39/90020
Silver Hammetone



TIGER Drylac[®] 09/90190
Silver Antique/Vein



TIGER Drylac[®] 49/80190
Iron Glimmer P-7



TIGER Drylac[®] 44/80026
Graphite Smooth Matte



TIGER Drylac[®] 39/80005
Black Hammetone



TIGER Drylac[®] 49/69400
Bronze Pearlescent



TIGER Drylac[®] 49/62070
Rail Bronze Matte 60±5



TIGER Drylac[®] 38/60080
Statuary Bronze 30±5



TIGER Drylac[®] 49/62721
Brown Fine Texture



TIGER Drylac[®] 49/60015
Pyrite Fine Texture



TIGER Drylac[®] 49/62711
Rust Fine Texture



TIGER Drylac[®] 44/60035
Lava Smooth Matte



TIGER Drylac[®] 44/60034
Breccia Smooth Matte



TIGER Drylac[®] 09/90180
Copper Antique/Vein



TIGER Drylac[®] 09/90200
Gold Antique/Vein



TIGER Drylac[®] 49/19365
Tan Smooth Glossy 85±5



TIGER Drylac[®] 49/10388
Bengal Cream 95±5



TIGER Drylac[®] 39/15010
Beige 90±5



TIGER Drylac[®] 49/13750
Beige Fine Texture



TIGER Drylac[®] 49/11280
RAL 1013 Light Beige 85±5

Gloss level according to Gardner 60° ASTM D523.

Paper and ink limitations of color samples as well as influence from heat and light account for differences from actual powder coatings.

*We recommend a clear coat for products with this symbol. All other products are 3-coat.